

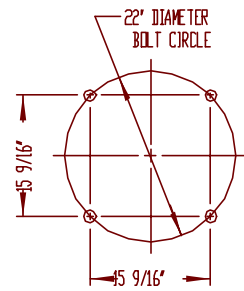
356 CAST AL. ALLOY POLE CAP WITH (3) 1/4"-20NC-2 ST. STL. ALLEN HEAD COP POINT SET SCREWS

5' - 0" STRAIGHT (9" O.D.)

2'

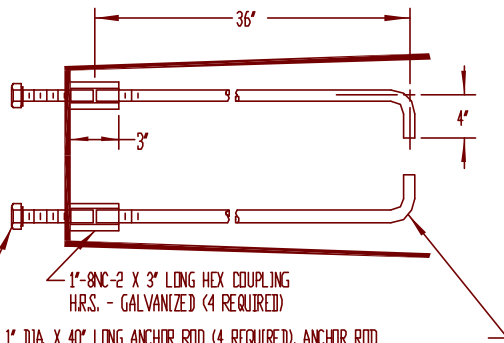
17' - 6"

19' - 6"



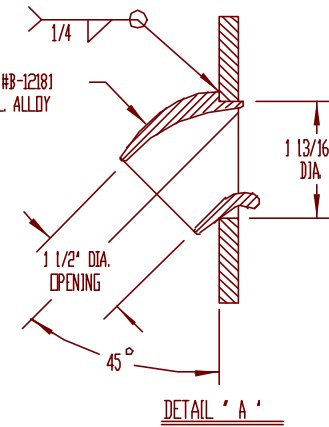
1"-8NC-2 X 3" LONG HEX HEAD BOLT, LOCKWASHER AND FLATWASHER - STAINLESS STEEL. 4 OF EACH REQUIRED

1" DIA. X 40" LONG ANCHOR ROD (4 REQUIRED). ANCHOR ROD TO BE 55,000 PSI YIELD STRENGTH PER AASHTO M-314-90, GRADE 55. TOP 12" OF ROD TO BE GALVANIZED PER AASHTO M232 CLASS C, ASTM A153.

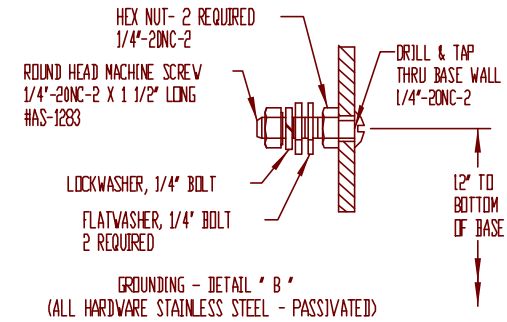


6063-T6 AL. ALLOY SHAFT 10" O.D. X 250 WALL TAPERED 10" X 9" SATIN BRUSH FINISH

WIRE INLET #B-12181 356 CAST AL. ALLOY



WIRE INLET, 1 1/2" DIA. OPENING 356 CAST AL. ALLOY #B-12181 DRILL 1 13/16" DIA. HOLE SEE DETAIL 'A'



GROUNDING - DETAIL 'B' (ALL HARDWARE STAINLESS STEEL - PASSIVATED)

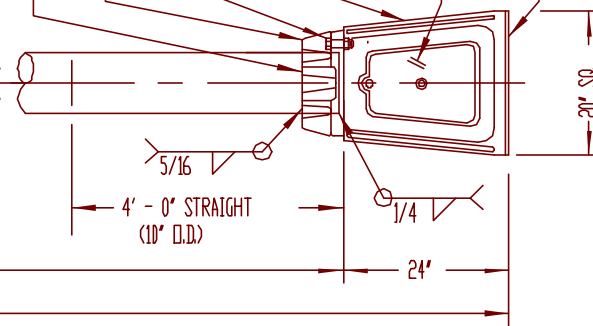
356-T6 CAST AL. ALLOY SHOE BASE TYPE 'S' SJ-24F' 356 CAST AL. ALLOY BOLT COVERS - 4 REQ'D. (FASTENED WITH 4 STAINLESS STEEL SCREWS)

CONNECTING HARDWARE - 4 SETS REQUIRED 1"-8NC-2 X 4 1/2" LG. ASTM A-193 GRADE B8 HEX HEAD BOLT WITH HEX NUT, LOCKWASHER AND (2) FLATWASHERS - ALL STAINLESS STEEL - PASS.

356-T6 CAST AL. ALLOY TRANSFORMER BASE TYPE TB-481 PER DWG. C-68095 WITH GROUND SCREW PER DETAIL 'B'

1/4" THK. ABS PLASTIC DOOR ASSEMBLY ALUMINUM GREY COLOR WITH ULTRA-VIOLET INHIBITORS

BOTTOM OF BASE TO BE COATED WITH ASPHALTIC PAINT



- NOTE:
 1. - USE 4043 WELD WIRE.
 2. - 6063 ASSEMBLY .375 WALL OR LESS TO BE HEAT-TREATED TO T6 TEMPER AFTER WELDING.

					P&K	
REV.	DESCRIPTION	DATE	BY	CHK	INFORM.	
A	WAS 'B' SIZE DRAWING	11-21-91	WW		PROJECT NO.	P&K POLE PRODUCTS, INC. 84 Foundry St, Newark, N.J.
					TITLE	NJDOT TYPE 'K' POLE
					PROJECT NO.	S1090019063Z-10
					BY	MMS. 12-22-88
					CH	AW. 12-22-88
					DATE	12-22-88
					CHECKED	NEW JERSEY DEPT. OF TRANSPORTATION
					DATE	NONE
					REV. NO.	C-82087-1
					REV.	REV. (A)